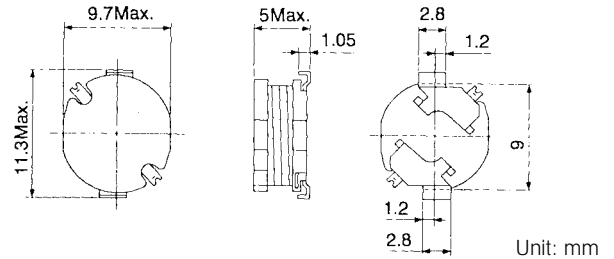
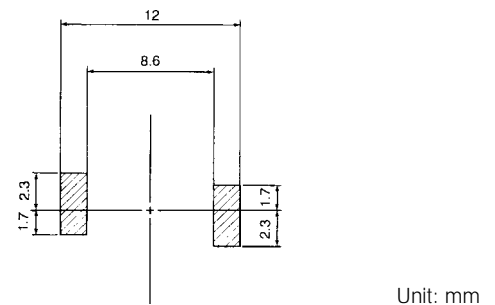


TYPE D10F
For Reflow Soldering
Frequency Range: 1kHz ~ 1MHz
Inductance Range: 10 ~ 1500μH

Features

- Low profile SMD Type (5mm high)
- Suitable for large current
- Suitable for reflow soldering
- Available on tape and reel for automatic insertion

Recommended patterns:

STANDARD PARTS SELECTION GUIDE

- (1) Inductance is measured by LCR-meter 4284A (HP) or equivalent.
 (2) DC resistance is measured by Digital Multimeter TR6871 (Advantest) or equivalent.

- (3) Maximum allowable DC current is that which causes a 10% inductance reduction from the initial value, or coil temperature to rise by 40°C, whichever is smaller. (Reference ambient temperature 20°C).

TYPE D10F

| TOKO Part Number | Inductance ⁽¹⁾ L (μH) | Tolerance | Test Frequency (kHz) | DC Resistance ⁽²⁾ (Ω) max. | Rated DC Current ⁽³⁾ (A) max. |
|------------------|----------------------------------|-----------|----------------------|---------------------------------------|--|
| A814AY-100M=P3 | 10 | ±20% | 100 | 0.047 | 2.60 |
| A814AY-120M=P3 | 12 | ±20% | 100 | 0.050 | 2.48 |
| A814AY-150M=P3 | 15 | ±20% | 100 | 0.058 | 2.27 |
| A814AY-180M=P3 | 18 | ±20% | 100 | 0.067 | 2.15 |
| A814AY-220M=P3 | 22 | ±20% | 100 | 0.075 | 2.00 |
| A814AY-270M=P3 | 27 | ±20% | 100 | 0.087 | 1.84 |
| A814AY-330M=P3 | 33 | ±20% | 100 | 0.095 | 1.72 |
| A814AY-390M=P3 | 39 | ±20% | 100 | 0.12 | 1.58 |
| A814AY-470K=P3 | 47 | ±10% | 100 | 0.15 | 1.44 |
| A814AY-560K=P3 | 56 | ±10% | 100 | 0.18 | 1.28 |
| A814AY-680K=P3 | 68 | ±10% | 100 | 0.20 | 1.20 |
| A814AY-820K=P3 | 82 | ±10% | 100 | 0.23 | 1.09 |
| A814AY-101K=P3 | 100 | ±10% | 100 | 0.27 | 1.05 |
| A814AY-121K=P3 | 120 | ±10% | 100 | 0.33 | 0.92 |
| A814AY-151K=P3 | 150 | ±10% | 100 | 0.40 | 0.80 |
| A814AY-181K=P3 | 180 | ±10% | 100 | 0.53 | 0.73 |
| A814AY-221K=P3 | 220 | ±10% | 100 | 0.60 | 0.69 |
| A814AY-271K=P3 | 270 | ±10% | 100 | 0.84 | 0.60 |
| A814AY-331K=P3 | 330 | ±10% | 100 | 1.00 | 0.53 |
| A814AY-391K=P3 | 390 | ±10% | 100 | 1.09 | 0.49 |
| A814AY-471K=P3 | 470 | ±10% | 100 | 1.25 | 0.46 |
| A814AY-561K=P3 | 560 | ±10% | 100 | 1.63 | 0.41 |
| A814AY-681K=P3 | 680 | ±10% | 100 | 1.90 | 0.38 |
| A814AY-821K=P3 | 820 | ±10% | 100 | 2.44 | 0.34 |
| A814AY-102K=P3 | 1000 | ±10% | 100 | 2.80 | 0.31 |
| A814AY-122K=P3 | 1200 | ±10% | 100 | 3.67 | 0.27 |
| A814AY-152K=P3 | 1500 | ±10% | 100 | 4.37 | 0.25 |

Note: =P3 is added to each part number to indicate tape and reel packaging.

 Please read PRECAUTIONS and NOTES sections of this catalog for safe operation. This catalog contains consumer grade specifications only. Detailed technical specifications are available upon request.